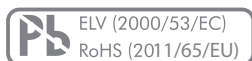


DATA SHEET
AUDIO SOLUTIONS UNI SELECTOR
ELMA
Your Solution Partner

MAIN FEATURES

VERSATILE, MULTI-DECK SELECTOR SWITCH WITH HORIZONTAL PCB MOUNTING OPTION

- Exceptionally low-bounce contact system and precise switch feel
- 1.5, 4, 8 or 15 Ncm switching torque
- 12 positions (30° indexing) or 24 positions (15° indexing)
- 1 pole x 12/24 positions up to 4 poles x 3/6 positions per wafer
- Shorting or non-shorting
- Up to 6 wafers
- User selectable end-stop screw
- Compatible with Elma's Remote Audio Plus product


POSSIBLE CUSTOMIZATION

- Switch function
- PCB shape and connection

UNI SELECTOR

TYPICAL APPLICATIONS

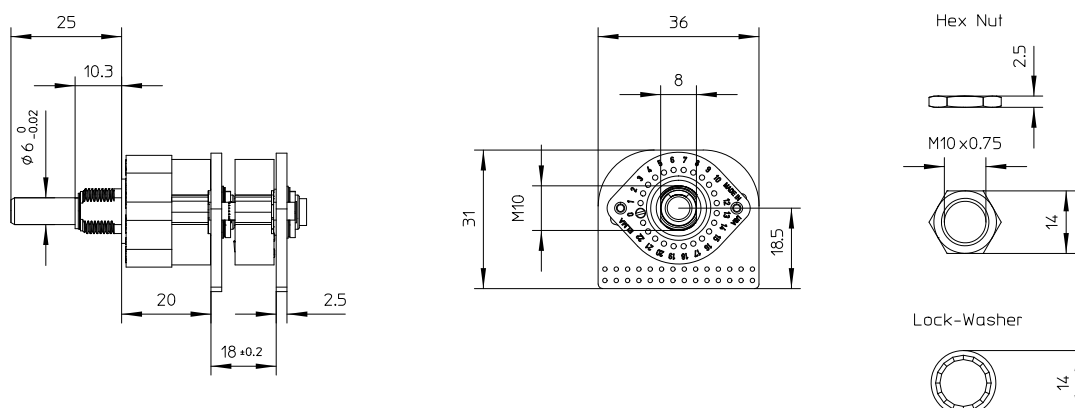
- Test & measurement, medical
- Home audio and studio

DESCRIPTION

Elma's Uni Selector is a versatile, multi-deck selector switch specifically designed for bounce sensitive, analog switching applications i.e. high-end audio.

The switch offers various torque options ranging from 1.5 to 15 Ncm while providing 12 position (30° indexing) or 24 position (15° indexing). The functionality per wafer comprises up to 4 poles x 3/6 positions (shorting or non-shorting) while up to 6 wafers are available. The number of positions can be customized by the user installing an end-stop screw to the positions of his preference (to be ordered separately).

The Uni Selector comes with rectangular pin headers which allow the switch to be mounted horizontally on a PC board. For remote control applications Elma offers motorized IR-remote kits (Remote Audio Plus), that can be directly attached to the switch.

DIMENSIONS (mm)


DATA SHEET

AUDIO SOLUTIONS UNI SELECTOR

ELMA
Your Solution Partner

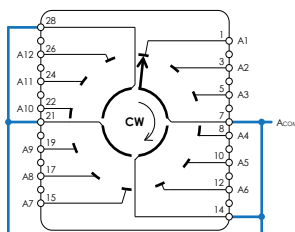
TECHNICAL DATA

GENERAL

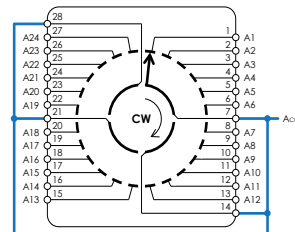
Indexing Resolution:	12 positions (30° indexing; 330° travel) or 24 positions (15° indexing; 345° travel)
Switching torque:	1.5, 4, 8 or 15 Ncm (+/- 30%, over temperature range and life)
Rotational life:	25k cycles (over temperature range)
Contact system:	Low-bounce wiper with 3 micron hard gold plated PCB
Electrical load:	42 VDC max., 500 mA max. (resistive load, over temperature range and life)
Header:	Rectangular, 2x 14 pins, 0.1" pitch, gold plated, Digikey P/O# S2111EC-14-ND (included)
Packaging:	Single piece packed, lock washer and two nuts are included

CIRCUITRY AND PIN ALLOCATION (PER WAFER)

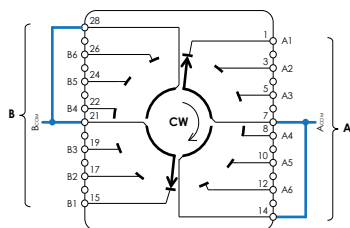
1 pole x 12 pos.
(30°)



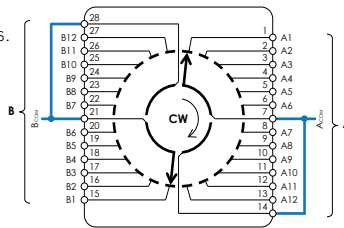
1 pole x 24 pos.
(15°)



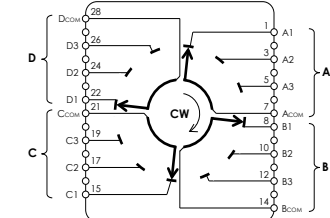
2 poles x 6 pos.
(30°)



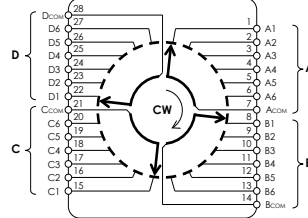
2 poles x 12 pos.
(15°)



4 poles x 3 pos.
(30°)



4 poles x 6 pos.
(15°)



When using one or two pole configurations the four common eyelets have to be interconnected as indicated above (blue lines).

ORDERING CODE

US	-	-	-	-	-	-
SWITCHING TORQUE A 1.5 Ncm (not recommended for >2 wafers) B 4 Ncm C 8 Ncm D 15 Ncm		SWITCHING MODE S Shorting N Non-Shorting				
NUMBER OF WAFERS X Number of wafers (max.6)		FUNCTION (per wafer) 112 1 pole, 12 positions (30° indexing) 206 2 pole, 6 positions (30° indexing) 403 4 pole, 3 positions (30° indexing) 124 1 pole, 24 positions (15° indexing) 212 2 pole, 12 positions (15° indexing) 406 4 pole, 6 positions (15° indexing)				

ACCESSORIES TO ORDER:

Spare nut:	P/N 5622-16
Stop screw (10 pcs. pack):	P/N 4124-21