

# Model EN08

**8 mm Rotary Encoder**

**2 Bits Gray Code**

**Incremental/Contacting Type**

**Metal Bushing/Shaft**

**S.P.S.T. Momentary Switch Option**

**Dual Encoders with Concentric Shaft**

**RoHS Compliant**



## MODEL STYLES

Side Adjust, Single Encoder	EN08-N
Side Adjust, Single Encoder, with Momentary Switch	EN08-S
Side Adjust, Dual Encoders, Concentric shaft	EN08-C

## ELECTRICAL<sup>1</sup>

Pulses ( Per Revolution )	10
Encoder Closed Circuit Resistance	3.0 Ohms, max.
Encoder Contact Rating	1.0mA/ 5Vdc
Operating Current, Maximum	1.0mA
Dielectric Strength	200Vac, 1 minute
Insulation Resistance, Minimum	100M Ohms
Sliding Noise ( at 60 RPM )	5 ms max.
Contact Bounce ( at 15 RPM)	10 ms max.
Operating Speed ( RPM ), Maximum	30 RPM
Switch Power rating	10mA/ 5Vdc
Switch Contact Resistance	100 milliohms
Actual Electrical Travel, Nominal	Continuous

## MECHANICAL

Total Mechanical Travel	Continuous
Detents ( per Revolution)	0, 20
Rotational Torque of Detent, Maximum	1.0 oz-in
Switch Operating Force, Maximum	850 gf
Switch Travel, Maximum	0.5mm

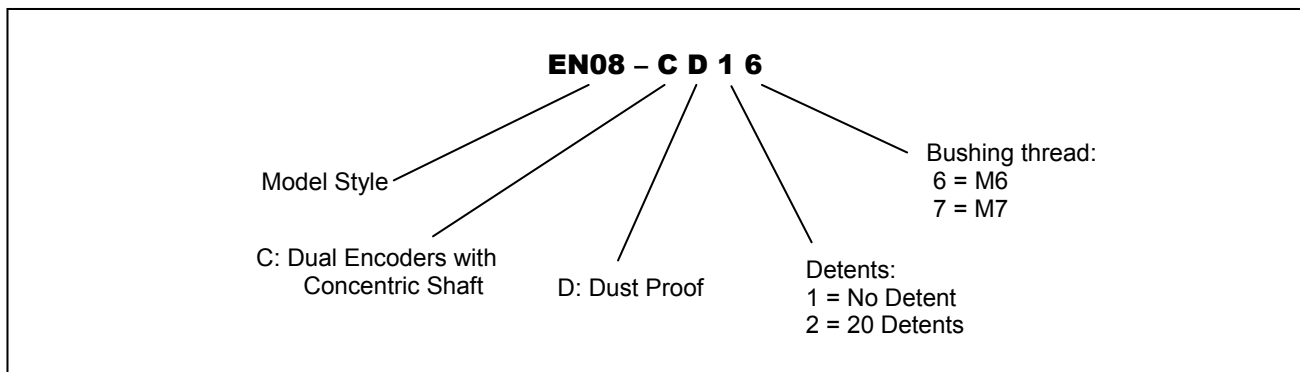
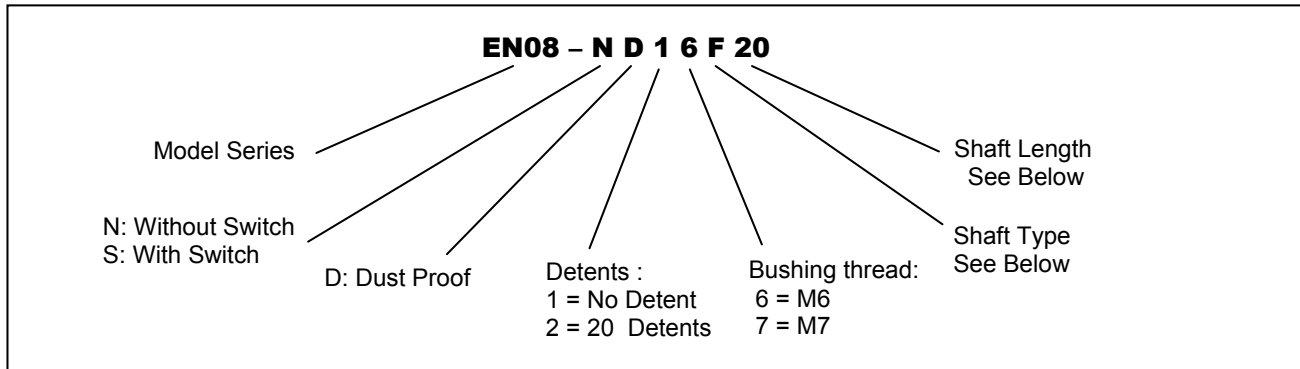
## ENVIRONMENTAL

Operating Temperature Range	-30°C to +70°C
Operation Life	Switch: 15,000 actuations, Encoder : 50,000 cycles

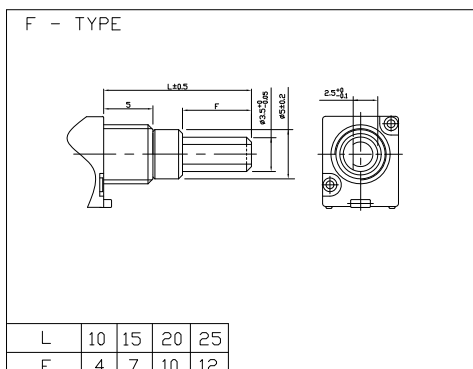
<sup>1</sup> Specifications subject to change without notice.

## Model EN08

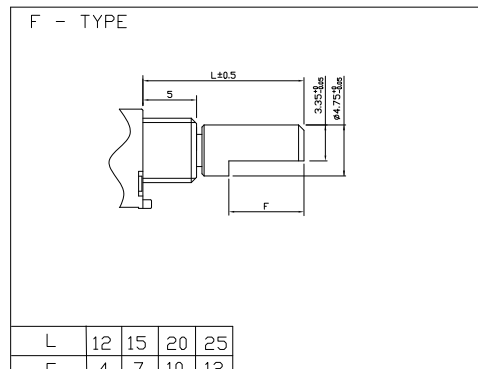
### ORDERING INFORMATION<sup>2</sup>



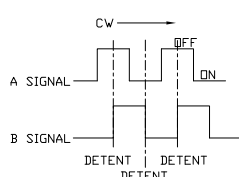
#### Shaft Type for P08x-N



#### Shaft Type for P08x-S



### CIRCUIT DIAGRAM

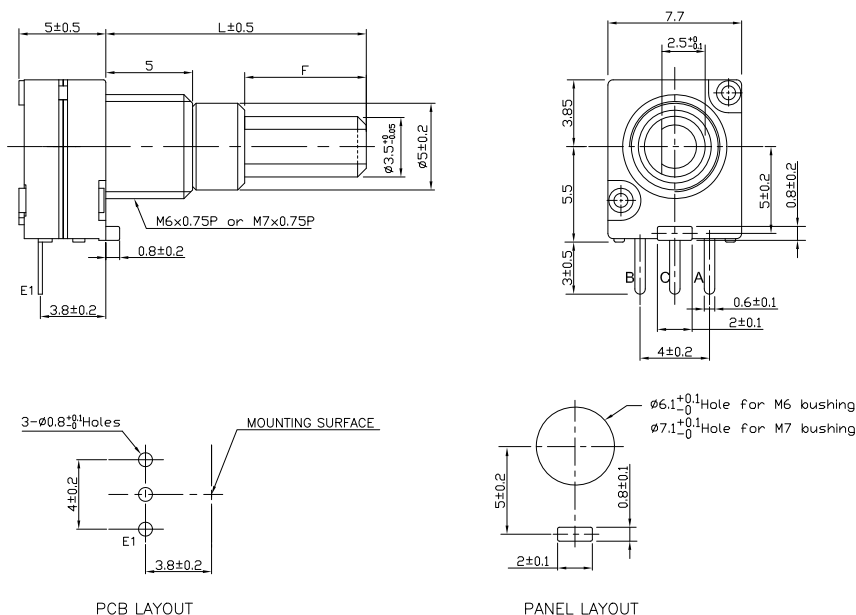


<sup>2</sup> Contact our customer service for custom designs and features.

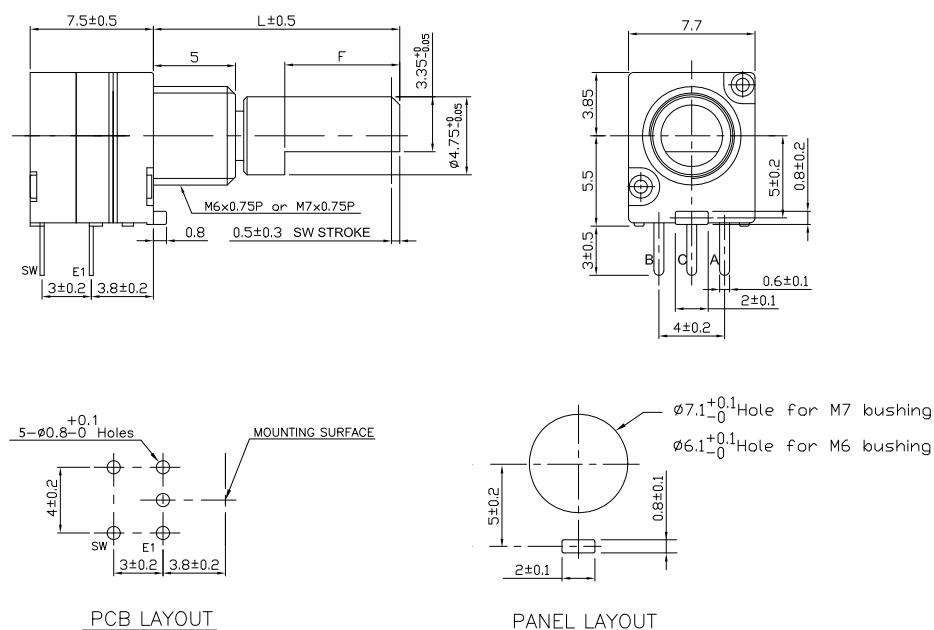
# Model EN08

## OUTLINE DRAWING

### EN08-N (Single Encoder)



### EN08-S (Single Encoder, with Momentary Switch)



## Model EN08

### EN08-C (Dual Encoders, Concentric shaft)

